

[www.myschlick.com](http://www.myschlick.com)



**SCHLICK** 多变雾化喷嘴技术  
SCHLICK Multispray technology

## SCHLICK 多变雾化喷嘴技术详情

SCHLICK Multispray technology – progress in detail



### 材质

- 316L 不锈钢
- 其他客户指定材质

### Materials

- Stainless steel  
1.4404 (AISI 316L)
- other materials  
on request



这是Schlick最新开发出来的技术,可用作两流体雾化喷嘴和压力式喷嘴

The newly developed SCHLICK design for all current atomisation technologies for two-substance nozzle and pressure nozzle applications

设计巧妙, 部件少, 模块化, 易于清洁和变换型号

The sophisticated SCHLICK design with a minimal number of individual parts enables simple cleaning and fast conversion

# 多变雾化喷嘴技术

**100%** 无滴漏  
drip-free

气动阀能保证100%无滴漏

Basic system with pneumatic ON/OFF control which is therefore 100% drip-free

关键部件表面粗糙度小于

Functional components with surface quality of Ra < 0.8

雾化均匀、雾化效果一致性好

Completely homogeneous and reproducible spray results

# SCHLICK 多变雾化技术的详情

## SCHLICK Multispray technology in detail



# SCHLICK 多变雾化喷嘴技术— 一切皆有可能

## SCHLICK Multispray – the all-rounder

SCHLICK 多变雾化技术增加了喷嘴的多用性。实际应用中，工艺条件经常会有变化，SCHLICK 多变雾化喷嘴技术用于各种雾化应用：二流体喷嘴（包括扁喷型、内混或外混型等），压力式喷嘴（包括实心锥喷嘴、空心锥喷嘴、扁平喷嘴、喷射喷嘴等）。

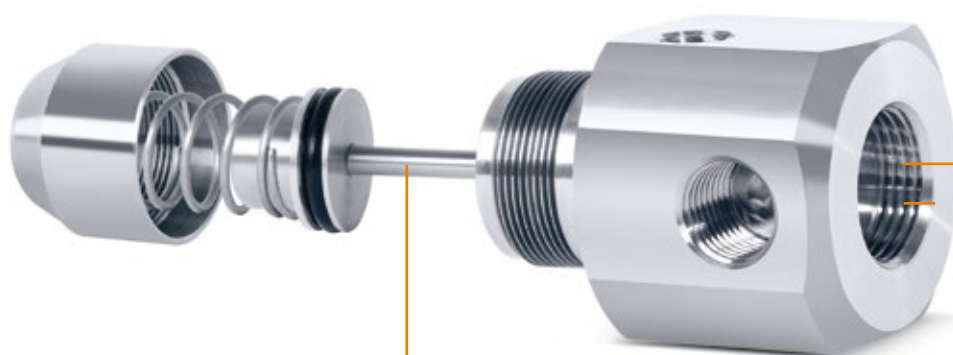
SCHLICK 多变雾化喷嘴技术使得喷嘴能用于多种雾化场合。

相关应用以及数据可在后续页中找到。

SCHLICK Multispray increases flexibility. In process engineering, the prevailing conditions change frequently. For this reason, SCHLICK Multispray can be used with all current atomisation technologies for two-substance nozzle (flat jet design and internal/external mixing) and pressure nozzle (hollow cone nozzles, full cone nozzles, flat jet nozzles and smooth jet nozzles) applications.

The SCHLICK Multispray series enables the use of a wide range of compact and flexible atomisation nozzles.

A list of possible areas of application and the corresponding accessories can be found on the following pages.



100%  
无滴漏  
drip-free

当控制气关闭时，喷嘴通针迅速自动顶出，封住出液口，这特别适用于要求无滴液的情况。

The nozzle needle closes the liquid outlet automatically and promptly by shutting off the control air. This is particularly suitable for spraying in cycles and especially when using pressurised liquids, for which dripping must be avoided.

创新性设计确保了完美雾化效果:

- 用途极为广泛
- 气动开/关控制
- 结构简单, 部件少
- 安装拆卸非常简单
- 方便清洁

Innovative product design for perfect spraying:

- Wide range of uses
- Pneumatic ON/OFF control
- Simple design with minimal individual parts
- Simple assembly/disassembly
- Simple cleaning



930系列

### 用作两流体喷嘴

#### Use as two-substance nozzle

风帽+对应的喷芯和通针, 就组成一个两流体喷嘴, 基本能用于所有两流体喷嘴雾化场合。

The correct combination of nozzle cap and associated liquid insert + needle makes it possible to implement all current atomisation technologies for two-substance nozzle applications using only one nozzle unit.



S121 V系列

### 用作压力式喷嘴

#### Use as pressure nozzle



SCHLICK  
多变喷嘴-  
适配器

SCHLICK-  
Multispray-  
Adapter

通过多变喷嘴适配器可以使得喷嘴变成带气动控制的压力喷嘴, 无滴液现象。

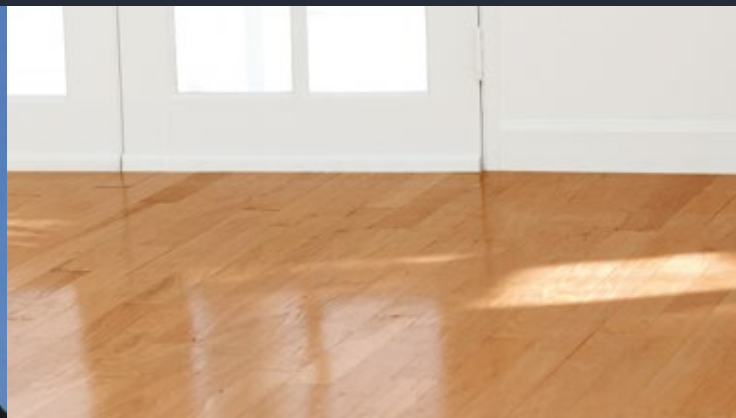
喷嘴的变换极为简单, 基本不需要花费停机时间, SCHLICK多变喷嘴技术确保了转换过程极为迅速。完美变换出各种解决方案

The SCHLICK Multispray adapter even enables the nozzle to be used as a pneumatically controlled pressure nozzle, without any dripping.

Downtimes due to the complicated exchange of nozzle units are virtually eliminated because of a quiet simple conversion. SCHLICK Multispray thus enables the quickest possible response to new conditions. Ideal for carrying out lots of different processes.

SCHLICK 多变喷嘴—多用性与高精度并济

SCHLICK Multispray – variety and precision in harmony



### 应用

空气调节  
包衣  
冷却  
消毒  
精整  
制粒  
润滑  
混合  
增湿  
工艺工程  
喷雾干燥  
烟草工业

### Applications

Air conditioning  
Coating  
Cooling  
Disinfecting  
Finishing  
Granulating  
Lubrication  
Mixing  
Moisturising  
Process engineering  
Spray drying  
Tobacco industry




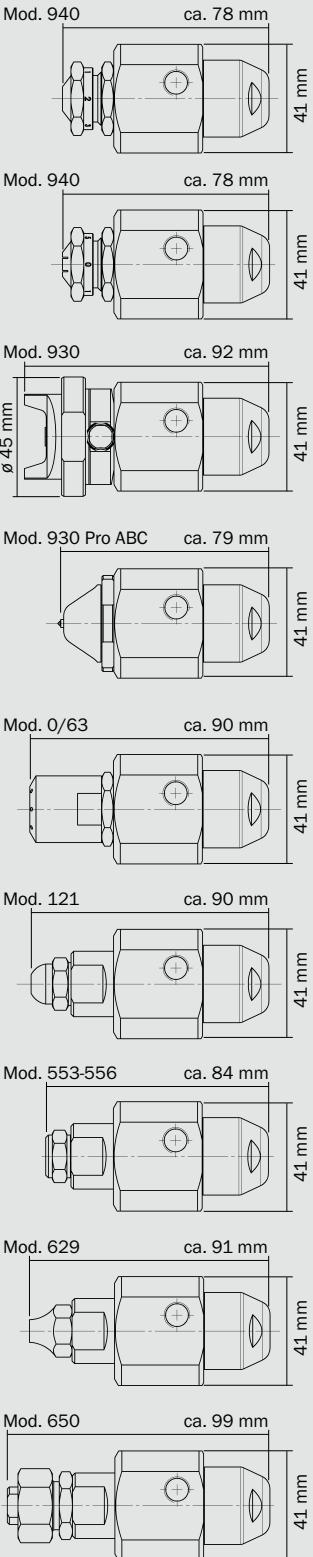
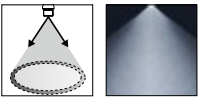


# SHCHLICK多变喷头—简介

## SCHLICK Multispray technology – overview

型号 Model	<b>SCHLICK 940</b> 多变喷头系列 圆形雾化 / Round spray	<b>SCHLICK 940</b> 多变喷头系列 扁平喷嘴 / Flat-jet	<b>SCHLICK 930</b> 多变喷头系列	<b>SCHLICK 930 Pro ABC</b> 多变喷头系列	<b>SCHLICK 0/63</b> 多变喷头系列
雾化角度 Spray angle	10° - 40°	大约 30° x 70° approx. 30° x 70°	10° - 90°	大约 60° approx. 60°	大约 70° approx. 70°
雾化模式 Spray pattern	圆锥形 Circular full cone	扁椭圆形 Oval flat-jet	扁椭圆形 Oval flat-jet	扁椭圆形 Oval flat-jet	圆锥形 Circular full-cone
					
内混型/外混型 Internal mixing/ external mixing	外混 External mixing	外混 External mixing	外混 External mixing	外混 External mixing	内混 Internal mixing
处理量 Capacity	1-120升/小时 (取决于应用场合和液滴大小要求)	1-120升/小时 (取决于应用场合和液滴大小要求)	1-60升/小时 (取决于应用场合和液滴大小要求)	3-180升/小时 (取决于应用场合和液滴大小要求)	5-100升/小时 (取决于应用场合和液滴大小要求)
特性 Features	雾化液滴细小, 供液方式可选择吸入或者压力泵入 参数及性能, 和 <b>940</b> 系列喷嘴类似	雾化液滴细小, 供液方式可选择吸入或者压力泵入 参数及性能, 和 <b>940</b> 系列喷嘴类似	雾化液滴细小, 供液方式可选择吸入或者压力泵入 参数及性能, 和 <b>930</b> 系列喷嘴相同	专利防结须风帽能避免物料在风帽位置堆积 参数及性能, 和 <b>930 Pro ABC</b> 系列喷嘴类似	雾化介质和雾化液体在Schlick专利风帽的内部混 参数及性能, 和 <b>0/63</b> 系列喷嘴相同
	<i>Finest atomisation, liquid can be absorbed within certain boundaries or applied with pressure</i> <b>Technical Details and performance like SCHLICK-Mod. 940</b>	<i>Finest atomisation, liquid can be absorbed within certain boundaries or applied with pressure</i> <b>Technical Details and performance like SCHLICK-Mod. 940</b>	<i>Finest atomisation, liquid can be absorbed within specific boundaries using injection properties of the atomising air or applied with pressure</i> <b>Technical Details and performance as SCHLICK-Mod. 930</b>	<i>New-patented air cap (anti-bearding cap) prevents build-up of product residue on the air cap (ABC-Technology®)</i> <b>Technical Details and performance like SCHLICK-Mod. 930 Pro ABC</b>	<i>Atomizing medium and liquid are mixed within a patented internal mixing air cap</i> <b>Technical Details and performance as SCHLICK-Mod. 0/63</b>



121 V 系列	553-556 系列	629 系列	650 系列	
				
15°, 30°, 45°, 60°, 78°, 90°, 120°	30°, 45°, 60°, 90°, 120°		15°, 30°, 45°, 60°, 90°, 120°	
空心锥 Circular hollow-cone	圆形或方形 Circular or square	喷射状(无雾化) Smooth-jet (no atomisation)	流量 Flat-jet	
				
3 bar 时 0.014 - 2.5 升/分钟(水)  0.014 - 2.5 l/min with 3 bar (water)	3 bar 时 0.5 - 6 升/分钟(水)  0.5 - 6 l/min with 3 bar (water)	3 bar 时 0.045 - 6 升/分钟(水)  0.045 - 6 l/min with 3 bar (water)	3 bar 时 0.1 - 5 升/分钟(水)  0.1 - 5 l/min with 3 bar (water)	
轴向空心锥形喷嘴, 非常细的均匀雾化, 小孔直径小, 可提供过滤器参数及性能, 和 121 系列喷嘴相同  Axial hollow-cone nozzle, very fine uniform atomisation with small orifice diameters, available with filter <b>Technical Details and performance as SCHLICK-Mod. 121</b>	实心锥喷嘴, 配备了涡轮装置, 流体有杂质也适用, 喷嘴耐磨, 即使在供液压力不稳定的情况下, 也能均匀雾化参数及性能, 和 553-556 系列喷嘴相同  Axial full-cone nozzle, swirl chamber with large ducts, insensitive to obstructions, wear-resistant, uniform atomisation even with unsteady liquid pressure <b>Technical Details and performance as SCHLICK-Mod. 553-556</b>	精准、雾化距离远、扁喷参数及性能, 和 629 系列喷嘴相同  Very exact, far-reaching, smooth-jet <b>Technical Details and performance as SCHLICK-Mod. 629</b>	喷芯可随意更换, 位置可变, 液体流量小时, 雾化极为精细, 液滴分布均匀参数及性能, 和 650 系列喷嘴相同  Nozzle body with exchangeable orifice insert, variable positioning of nozzle, fine atomisation with low capacity, uniform liquid distribution <b>Technical Details and performance as SCHLICK-Mod. 650</b>	

# SCHLICK 多变喷嘴—连接头和附

## SCHLICK Multispray – connectors and accessories



用作两流体喷嘴  
Use as two-substance nozzle

控制气接口, G 1/8" (ISO 228)  
Control air, G 1/8" (ISO 228)

100% 无滴漏  
drip-free

液体接口, G 1/4" (ISO 228)  
Liquid, G 1/4" (ISO 228)

雾化气接口, G 1/4" (ISO 228)  
Atomising air, G 1/4" (ISO 228)

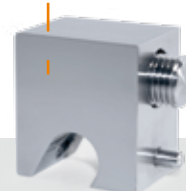


专用清洁套装  
Professional nozzle cleaning set



接头材质为塑料和黄铜镀镍, 可选直角型和平角型

Fittings made from plastic, nickel-plated brass; straight and angled versions



喷嘴固定块可单独定制, 标准品是适用于直径10mm的杆子, 如杆子是其它尺寸, 也可定制

Fixing unit for attachment to a rod. Standard diameter 10 mm – other diameters available on request



## SCHLICK – 为雾化解决方案而生

精心打造每一个细节  
Perfection to the last detail

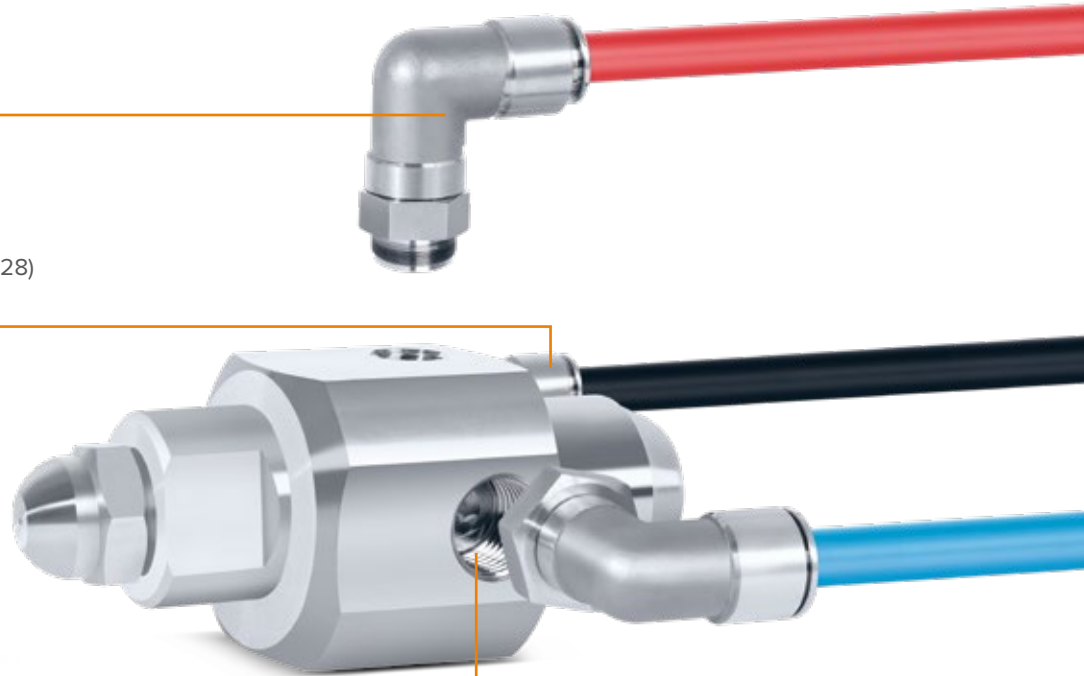
从设备设计规划到实际批量生产，  
Schlick都能提供完美解决方案。

SCHLICK know-how – from planning  
to installation. We would be delighted  
to assist in the optimisation of your  
technical and operational results.

● 控制气接口, G 1/8" (ISO 228)  
Control air, G 1/8" (ISO 228)

● 液体接口, G 1/4" (液体入口),  
(ISO 228)  
Liquid, G 1/4" (liquid inlet), (ISO 228)

● 盲堵或者液体回流接口,  
G 1/4" (ISO 228)  
Connection for dummy  
plug or liquid outlet,  
G 1/4" (ISO 228)



用作压力式喷嘴

Use as pressure nozzle



接头材质为1.4404不锈钢, 可选直角  
型和平角型

Fittings made from stainless steel  
1.4404; straight and angled versions

液管(蓝色)、控制气气管(红)、  
雾化气气管(黑)材质为PE,  
按米销售

Robust PE hose material for  
liquids (blue), control air (red)  
and atomising air (black);  
sold by the metre



Certified by



DIN EN ISO 9001:2000  
Zertifikat: 01 100 041248

to DIN EN ISO  
9001: 2000



*Living for Solutions.*

**Düsen-Schlick GmbH**  
Hutstraße 4  
D-96253 Untersiemau/Coburg  
Germany  
Tel.: +49 9565 9481-0  
Fax: +49 9565 2870

[www.myschlick.com](http://www.myschlick.com)  
[info@myschlick.com](mailto:info@myschlick.com)